

Reeve's Ramblings

The 2025 summer has been one of nice change. We started out so dry, but with the late June and July rains we are looking ahead to a good harvest.

As our focus was on road maintenance this summer, we hired Andy Wiens and Carl Kennedy as grader operators. Together with Murray they have done a great job getting our roads into very nice shape. Late September we will have a new JD grader to replace our well used 2014 160M CAT grader.

We purchased gravel this year from the Sonningdale area which is a longer haul, so we bought a set of Super Bee gravel trailers to make the haul more efficient. Doug is busy making 5 – 6 trips a day spreading that gravel on our roads.

Jerry Baker was busy on the track hoe digging out rocks on the roads. Now as we get into grass mowing, he will be doing that.

Nigel is busy with machine repairs and keeping the crew organized.

Thanks to our staff for keeping the RM in such nice condition.

Tonia and Beth will greet you if you call or stop in at the office with any concerns or requests that you have. They keep the office running very efficiently.

I want to thank our staff for a very well run season.

Happy Harvest,

Gary

Two RM councillors went fishing one day. They rented a boat and, in no time, found a great pickerel hole and caught their limit. "We need to mark this spot," says the first guy. The other guy agrees, pulls out a piece of chalk and puts an X in the middle of the boat. "That won't work," says the first guy. "What if we don't rent the same boat next time?" - Gary

Designated Heavy Haul CTP Route

Primary Weight Corridors – CTP (Clearing the Path) are municipal roads designed to handle heavy trucks and link to highways.

The designated CTP route through the RM is Larsen Road (Twp Rd 3083) from the north end of the RM south to the Radisson Grid (Twp Rd 404), east to Hwy 40 at Radisson, SK. Council requests that this designated route be driven for grain-related industry purposes (ie grain hauling, fertilizer).

Local producers are permitted to travel the shortest route from their farm to connect to the CTP route and highway network.

As a friendly reminder, Township Road 412 is a Class 5 grid.

Office Hours:
 Monday to Friday
 8:30 AM – 4:00 PM

Staff:

Administrator:
 Tonia Derksen

Assistant:
 Beth Usselman

Foreman:
 Nigel Cutting

Operators:
 Murray Mikituk
 Doug Olmstead

Jerry Baker
Carl Kennedy
Andy Wiens

Council:

Reeve: Gary Nickel
Div 1: Elizabeth Torrens
Div 2: Brett Larsen
Div 3: Dave Amson
Div 4: Darrel Wiebe
Div 5: Ian Hosegood
Div 6: Greg Flath

Yellowbend Transfer Station

Summer Hours (April 1 – October 1):
 Wednesday 4 – 8, Saturday 11 – 4

Winter Hours (October 2 – March 31):
 Saturday 11 – 4

Any questions call Ken Coutts, Operator at 306-827-7991.

Please call Ken before bringing large loads.

Controlled Burn Reporting:
 1-866-404-4911

RM Office:

Phone:
 306-997-2101

Fax:
 306-997-2201

Email:
 rm405@sasktel.net

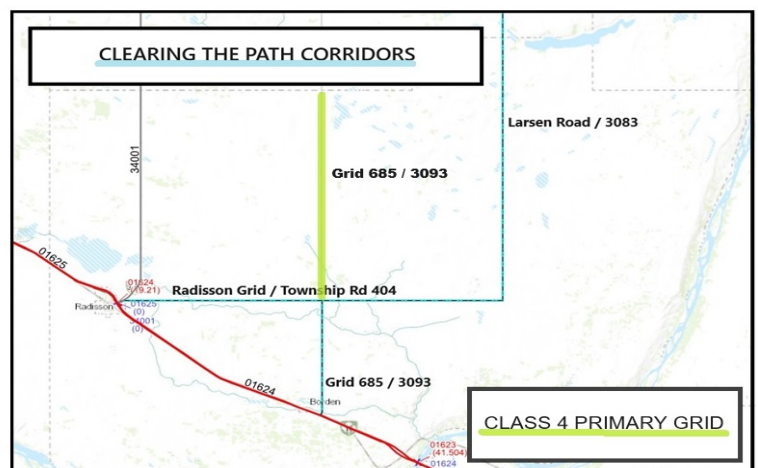
Website:
 rmofgreatbend.com

RM Shop:
 306-997-2072

Building Inspector:
 Lee Tracksell
 306-222-8241

Pest Control:
 Kelly Wall
 306-480-5965

Weed Control:
 Alana Gunsch
 306-292-8987



Passing Road Equipment

Have you ever wondered what to do when there is grader in operation on the road ahead of you? It can be an inconvenience, but they are working to improve road conditions for everyone's benefit. Here's how to handle the situation:

- If there is an approach close by, consider pulling off the road and allowing the machine to pass by.
- If there is room, pass the grader on the side with the most space at a maximum of 40 km/hr.
- If you are not comfortable passing, simply pull on to the shoulder, the operator will navigate around you.

Graders working as a team will leave enough room between machines to allow you to pass if needed.

When passing the gravel truck, lower your speed and leave plenty of room to avoid damage from loose gravel.

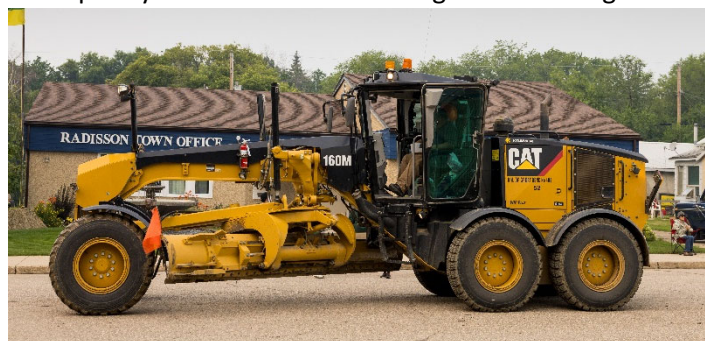


Photo credit: Bryon Kletzel

What's a Reassessment Year?

Every four years, Saskatchewan's provincial government asks SAMA (Saskatchewan Assessment Management Agency) to update property values across the province. When this revaluation happens, SAMA sends new assessed values to municipalities, and the province requires that municipalities use those new values when setting property taxes.

Since 2025 was a reassessment year, your property's assessed value and taxes may have changed after SAMA's review.

Tax Payments

Property Tax Payments can be made by cheque, cash, e-transfer, or through Affinity Credit Union, in person or online. When making payments through Affinity Credit Union you will need to use your "Customer Number" as your account number. This number can be located at the top right hand side of your tax notice- behind the landowner name and below the mailing date.

If paying by e-transfer, send to rm405@sasktel.net, no password required.

2024 Financials

2024 Financials have been completed by Jensen & Stromberg, Chartered Professional Accountants and approved by council. The full report is available on our website, or may be viewed in office.

RURAL MUNICIPALITY OF GREAT BEND NO. 405

Statement 1

STATEMENT OF FINANCIAL POSITION

December 31, 2024

with comparative figures for 2023

	2024	2023
ASSETS		
Financial assets:		
Cash and cash equivalents	\$ 650,801	398,536
Investments	150,000	450,000
Taxes receivable - Municipal	47,887	70,182
Other accounts receivable	85,356	147,261
Assets held for sale		
Long-term receivables	82,274	74,750
Debt charges recoverable		
Other		
Total financial assets	1,016,318	1,140,729
LIABILITIES		
Bank indebtedness		
Accounts payable	160,856	95,004
Accrued liabilities payable		2,791
Deposits		
Deferred revenue		
Asset retirement obligations		
Liability for contaminated sites		
Other liabilities		
Long-term debt	198,174	438,651
Lease obligations		
Total liabilities	359,030	536,446
NET FINANCIAL ASSETS (DEBT)	657,288	604,283
Non-financial assets:		
Tangible capital assets	3,080,083	3,293,875
Intangible capital assets		
Prepaid and deferred charges	188	6,529
Stock and supplies	26,524	232,166
Total non-financial assets	3,106,795	3,532,570
Accumulated surplus (deficit)	\$ <u>3,764,083</u>	4,136,853
Accumulated surplus (deficit) is comprised of:		
Accumulated surplus (deficit) excluding rereasurement gains (losses)	3,764,083	4,136,853
Accumulated rereasurement gains (losses) (Statement 5)		