

## Reeve's Ramblings

Greetings. Harvest is just around the corner, and we are anticipating a bountiful harvest. 2024 has been a tremendous year for hay, crops and gophers. The rains in May and June broke the drought but certainly made road maintenance more challenging. Thank you for bearing with us as we tried to make the roads passable during those wet weeks. Graveling has made progress, along with the capping of Great Deer Road from Hwy 340 heading east. We have a good line up of equipment and great staff who work hard at maintaining roads to the best of their abilities.

Highlight of the summer has been RM 405's own Savannah Sutherland competing in the 400m hurdles and the 4 x 400m relay at the summer Olympics in Paris. We are all very proud of her amazing achievements.

Best wishes for a safe harvest, bountiful gardens and safe travels on our roads.

*Gary*

## Municipal Elections

Municipal election date is Wednesday, November 13<sup>th</sup>. This election is for Divisions 1, 3, 5, Reeve and a bi-election (2 year term) for Division 6. Call for Nominations open September 24<sup>th</sup> and close Oct 9<sup>th</sup> at 4 PM.

## 2023 Financial Statements

Audited 2023 financial statements for the RM of Great Bend No. 405 are complete. Statements are available to view in the RM office or on the RM website, [rmofgreatbend.com](http://rmofgreatbend.com).

## Snow Removal Agreements

Like it or not, winter is coming! 2024 snow clearing agreements will be mailed out in September to ratepayers who have previously signed up for the service. Agreements need to be signed every year prior to any custom snow clearing work being done. If you would like to be added to the list, contact the RM office.

## Haying Policy - Bylaw No. 3-1991

Adjacent landowners or lessees have the first option to salvage hay along municipal roads. Other persons must contact the landowner or lessee prior to July 15. After July 15 any person may cut and salvage without permission, provided salvage operations have not already begun by landowner or lessee. All bales must be removed within one month of baling.

The RM may enter the right of way for maintenance or construction if deemed necessary with no compensation or re-imbusement to the party salvaging the hay therefrom.

### *Office Hours:*

Monday to Friday  
8:00 AM – 12:00 PM  
1:00 PM – 4:00 PM

### *Staff:*

#### *Administrator:*

Tonia Derksen

#### *Assistant:*

Beth Usselman

#### *Foreman:*

Nigel Cutting

#### *Operators:*

Terrence Reichert

Murray Mikituk

Doug Olmstead

Jerry Baker

### *Council:*

Reeve: Gary Nickel

Div 1: Elizabeth Torrens

Div 2: Brett Larsen

Div 3: Dave Amson

Div 4: Darrel Wiebe

Div 5: Ian Hosegood

Div 6: Vacant

### *RM Office:*

#### *Phone:*

306-997-2101

#### *Fax:*

306-997-2201

#### *Email:*

[rm405@sasktel.net](mailto:rm405@sasktel.net)

#### *Website:*

[rmofgreatbend.com](http://rmofgreatbend.com)

### *RM Shop:*

306-997-2072

### *Building Inspector:*

Lee Tracksell

306-222-8241

### *Pest Control:*

Kelly Wall

306-480-5965

### *Weed Control:*

Alana Gunsch

306-292-8987

### *Yellowbend Transfer Station*

#### *Summer Hours (April 1 – October 1):*

Wednesday 4 – 8, Saturday 11 – 4

#### *Winter Hours (October 2 – March 31):*

Saturday 11 – 4

Any questions call Ken Coutts, Operator at 306-827-7991.

**Please call Ken before bringing large loads.**

## Contact Information

House phones are becoming things of the past. Along with the convenience of wireless phone service is the inconvenience of no longer having a listed phone number to search for a contact. The RM encounters this challenge regularly. Please consider contacting the office and verifying that your mailing address and contact numbers are up to date in our system. Thank you!

## Text Notifications

The RM of Great Bend has a text messaging system to quickly share updates such as fire bans, railway issues, snow clearing and more. If you would like to receive notifications, please call or visit the RM office. Messages will be sent from 1-800-700-3876.

## Designated Heavy-Haul CTP Route

Producers within the RM are to travel the most appropriate roads from their farms to connect to the CTP route. Please note that Township Road 412 (Great Deer Road) is a Class 5 Grid, not a CTP or Primary Weight Grid.

**Vehicles 10T or greater are to travel at 60 km/hr.**

CTP and Primary Weight roads are highlighted to the right, all other roads in the RM of Great Bend are secondary weight roads.

## Payment Methods

The RM of Great Bend offers many payment options for your convenience: Cash • Debit • E-transfer to [rm405@sasktel.net](mailto:rm405@sasktel.net), no password required • Cheque • Online bill payment through Affinity Credit Union  
*Please note that we no longer accepted credit cards.*

## Civic Addressing

Civic Addressing is a province-wide standardized system of identifying and locating properties, by establishing unique access point locations. This system is used to assist emergency responders such as police, fire and ambulance in finding homes and businesses quickly in the event of an emergency.

A civic address provides an accurate way to locate the building because it pinpoints the precise point of access to your home or business from a range road, township road or highway. This additional detail can prove critical in emergency response situations.

How are Rural Civic Addresses determined?

- Each mile of Township Road/Range Road is divided into 40m lot intervals producing 80 addressable lots
- Even numbers are on the west/south side of road; odd numbers are on the east/north side of road
- Address numbers increase going north and west

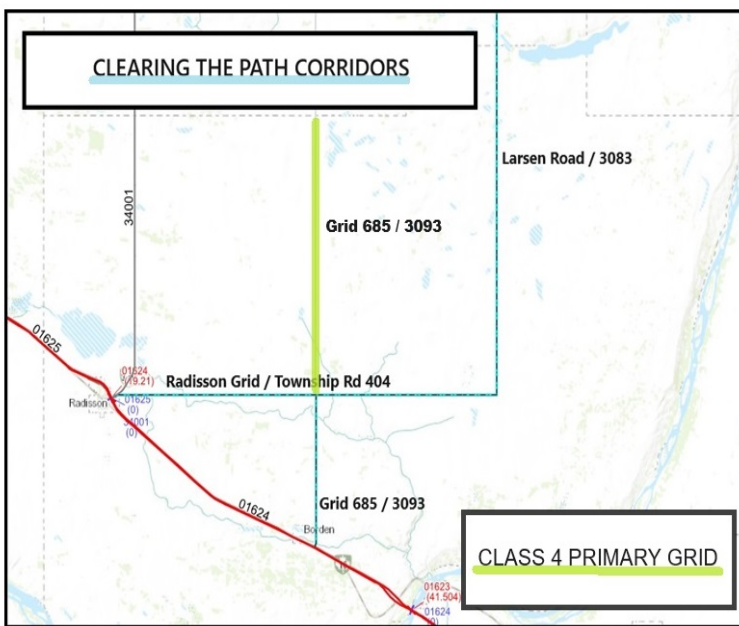
Address Examples:

28067 Range Rd 3135		
280	67	3135
The Township South of property	The property access lot number, based on its location along the road	Range Road number accessible by the property

313525 Township Rd 284		
3135	25	284
The Range Road number East of property	The property access lot number, based on its location along the road	Township Road Number accessible by property

## Weed Control

If you have questions or see noxious weeds anywhere in the RM, please call or text Weed Inspector Alana Gunsch. Leafy Spurge and Absinthe are of particular concern in our area.



## Newsletter

Would you like to receive newsletters by email? Send an email to [rm405assist@sasktel.net](mailto:rm405assist@sasktel.net) to be added to the list. Newsletters are also posted to our [rmofgreatbend.com](http://rmofgreatbend.com) website

## Pest Control

Please contact PCO Kelly Wall if you have any pest concerns. Kelly visits yards throughout the RM looking for signs of rat infestation, and has rat bait available.

Gopher poison is no longer available through the RM of Great Bend, please visit your local retailer to purchase.

## Road Maintenance

You may have noticed the Maintenance Department hard at work on the roads this summer. Graveling has been a major focus for the RM, as well as grading and some road repair projects. As a friendly reminder, road maintenance equipment with warning lights in operation has the right of way, and may operate in any direction on any portion of the road.

Traffic Safety Act Sections 219(7) and 224(1)

## Control Burn Reporting

Call the Provincial Emergency Communications Centre just prior to starting.

**1-866-404-4911**

When reporting a Control Burn you will be asked the following questions:

- What is your land location?
- Who is your Fire Service Provider?
- Driving Directions from local Fire Department?
- What are you burning?
- How long will your burn last?

You will be asked to call back once the burn has been completed.

Reporting your controlled burn will help eliminate unnecessary call outs to your local fire department. There is a minimum fee of one hour when your fire department is dispatched. The current provincial rate for each responding fire department is \$1,090.23/ hour.